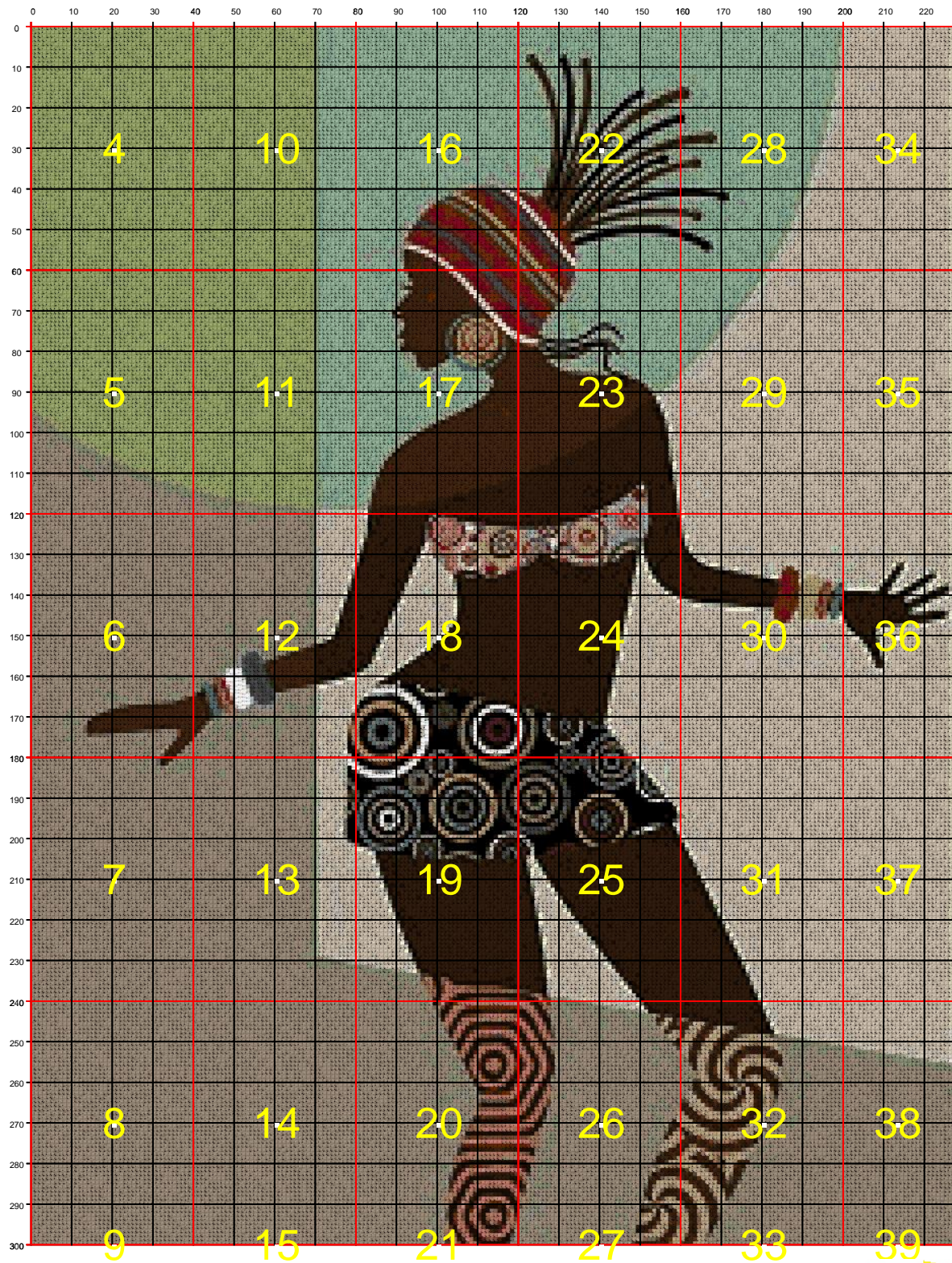


Prohibida su venta. Libre Distribución



Dimensiones del bordado en cms. (Alto x Ancho) / Size of embroidery in cms (Height x Width): 42 x 55

Puntos del Bordado / Stitches: 227 x 300

Número total de puntos / Total number of stitches: 68100

Colores / Colors : 80

Aida 14 (5,5 pts/cm)



La longitud del hilo de cada madeja PANDA es de 10 metros, un 20 % más que otras marcas del mercado.

Puede solicitar el material para este bordado en [www.hilosrosace.es](http://www.hilosrosace.es) o en el teléfono 965 240 207



Prohibida su venta. Libre Distribución

| COLOR | NOMBRE DEL COLOR      | CÓDIGO PANDA | NÚMERO DE PUNTOS | MADEJAS NECESARIAS |
|-------|-----------------------|--------------|------------------|--------------------|
|       | Shell Pink Med Light  | A3           | 85               | 1                  |
|       | Grape Very Dark       | A5           | 71               | 1                  |
|       | Forest Green Lt       | B5           | 137              | 1                  |
|       | Pewter Light          | B0           | 51               | 1                  |
|       | Mahogany Vy Dk        | C9           | 123              | 1                  |
|       | Black                 | D4           | 1240             | 1                  |
|       | Pewter Gray           | D9           | 94               | 1                  |
|       | Steel Gray Lt         | D0           | 163              | 1                  |
|       | Pistachio Green Lt    | G2           | 304              | 1                  |
|       | Pistachio Green Vy Lt | G3           | 51               | 1                  |
|       | Mustard Lt            | G6           | 230              | 1                  |
|       | Desert Sand Med       | G9           | 156              | 1                  |
|       | Pewter Gray Dark      | G0           | 137              | 1                  |
|       | Steel Gray Dk         | H1           | 83               | 1                  |
|       | Hazelnut Brown Lt     | H4           | 74               | 1                  |
|       | Brown Med             | H5           | 57               | 1                  |
|       | Avocado Grn V Lt      | J7           | 7692             | 4                  |
|       | Fern Green            | K9           | 172              | 1                  |
|       | Fern Green Lt         | K0           | 100              | 1                  |
|       | Fern Green Vy Lt      | L1           | 240              | 1                  |
|       | Ash Gray Vy Lt        | L2           | 118              | 1                  |
|       | Beige Brown Ult Vy Lt | L3           | 369              | 1                  |
|       | Jade Very Light       | M1           | 6223             | 3                  |
|       | Drab Brown V Lt       | N7           | 175              | 1                  |
|       | Desert Sand Ult Vy Dk | N8           | 184              | 1                  |
|       | Beige Gray Vy Dk      | N9           | 144              | 1                  |
|       | Beige Gray Dark       | N0           | 165              | 1                  |
|       | Beige Gray Med        | P1           | 291              | 1                  |
|       | Beaver Gray Vy Dk     | P2           | 64               | 1                  |
|       | Beaver Gray Dk        | P3           | 112              | 1                  |
|       | Beaver Gray Med       | P4           | 141              | 1                  |
|       | Beaver Gray Lt        | P5           | 241              | 1                  |
|       | Old Gold Vy Lt        | P8           | 314              | 1                  |
|       | Yellow Green Vy Lt    | T5           | 86               | 1                  |
|       | Cocoa Dark            | T9           | 89               | 1                  |
|       | Coffee Brown Dk       | V2           | 98               | 1                  |
|       | Garnet Medium         | V8           | 111              | 1                  |
|       | Garnet                | V9           | 125              | 1                  |
|       | Beige Gray Light      | W4           | 374              | 1                  |
|       | Beige Brown Vy Dk     | X7           | 130              | 1                  |
|       | Beige Brown Dk        | X8           | 106              | 1                  |
|       | Beige Brown Lt        | X0           | 113              | 1                  |
|       | Beaver Gray Ult Dk    | Y2           | 90               | 1                  |
|       | Coffee Brown Vy Dk    | Y0           | 2008             | 1                  |
|       | Red Copper Dark       | 5a           | 160              | 1                  |
|       | Gray Green Light      | 2b           | 55               | 1                  |





Prohibida su venta. Libre Distribución

| COLOR | NOMBRE DEL COLOR    | CÓDIGO PANDA | NÚMERO DE PUNTOS | MADEJAS NECESARIAS |
|-------|---------------------|--------------|------------------|--------------------|
|       | Avocado Grn Black   | 7b           | 272              | 1                  |
|       | Coffee Brown Ult Dk | 1c           | 5980             | 3                  |
|       | Dusty Rose Medium   | 7d           | 65               | 1                  |
|       | Jade Ultra Vy Lt    | 0d           | 66               | 1                  |
|       | Khaki Green Lt      | 9f           | 61               | 1                  |
|       | Brown Gray Vy Dk    | 0f           | 72               | 1                  |
|       | Brown Gray Med      | 1g           | 99               | 1                  |
|       | Brown Gray Light    | 2g           | 169              | 1                  |
|       | Mocha Brown Vy Dk   | 4g           | 224              | 1                  |
|       | Mocha Brown Med     | 5g           | 17931            | 8                  |
|       | Mocha Brown Vy Lt   | 6g           | 555              | 1                  |
|       | Yellow Beige Md     | 0g           | 280              | 1                  |
|       | Yellow Beige Lt     | 1h           | 13621            | 6                  |
|       | Green Gray          | 4h           | 816              | 1                  |
|       | Desert Sand         | 5h           | 85               | 1                  |
|       | Yellow Green Lt     | 6j           | 55               | 1                  |
|       | Black Brown         | 2k           | 1556             | 1                  |
|       | Gray Green Dark     | 5n           | 97               | 1                  |
|       | Tawny Vy Light      | 6n           | 95               | 1                  |
|       | Desert Sand Vy Dk   | 8n           | 190              | 1                  |
|       | Terra Cotta Vy Dk   | 1p           | 73               | 1                  |
|       | Terra Cotta Light   | 2p           | 278              | 1                  |
|       | Beige Gray Ult Dk   | 7p           | 164              | 1                  |
|       | Pewter Gray Vy Dk   | 8p           | 154              | 1                  |
|       | Blue Green Lt       | 1r           | 54               | 1                  |
|       | Celadon Green Lt    | 5r           | 778              | 1                  |
|       | Yellow Ultra Pale   | 1s           | 180              | 1                  |
|       | Rosewood Dark       | 5v           | 175              | 1                  |
|       | Cocoa Light         | 9v           | 84               | 1                  |
|       | Mocha Beige Med     | 1w           | 95               | 1                  |
|       | Mocha Beige Light   | 2w           | 100              | 1                  |
|       | Snow White          | 7w           | 62               | 1                  |
|       | White               | 5w           | 99               | 1                  |
|       | Ecu                 | 6w           | 169              | 1                  |















Prohibida su venta. Libre Distribución















Prohibida su venta. Libre Distribución















Prohibida su venta. Libre Distribución



Prohibida su venta. Libre Distribución

Table with 60 rows and 160 columns containing alphanumeric codes. Some cells are highlighted in red. The table is organized into 60 rows, each starting with a row number and containing 160 cells of alphanumeric data.













121 122 123 124 125 126 127 128 129 130 | 131 132 133 134 135 136 137 138 139 140 | 141 142 143 144 145 146 147 148 149 150 | 151 152 153 154 155 156 157 158 159 160

Prohibida su venta. Libre Distribución















161 162 163 164 165 166 167 168 169 170 | 171 172 173 174 175 176 177 178 179 180 | 181 182 183 184 185 186 187 188 189 190 | 191 192 193 194 195 196 197 198 199 200 |

Prohibida su venta. Libre Distribución















201 202 203 204 205 206 207 208 209 210 | 211 212 213 214 215 216 217 218 219 220 | 221 222 223 224 225 226 227

Prohibida su venta. Libre Distribución