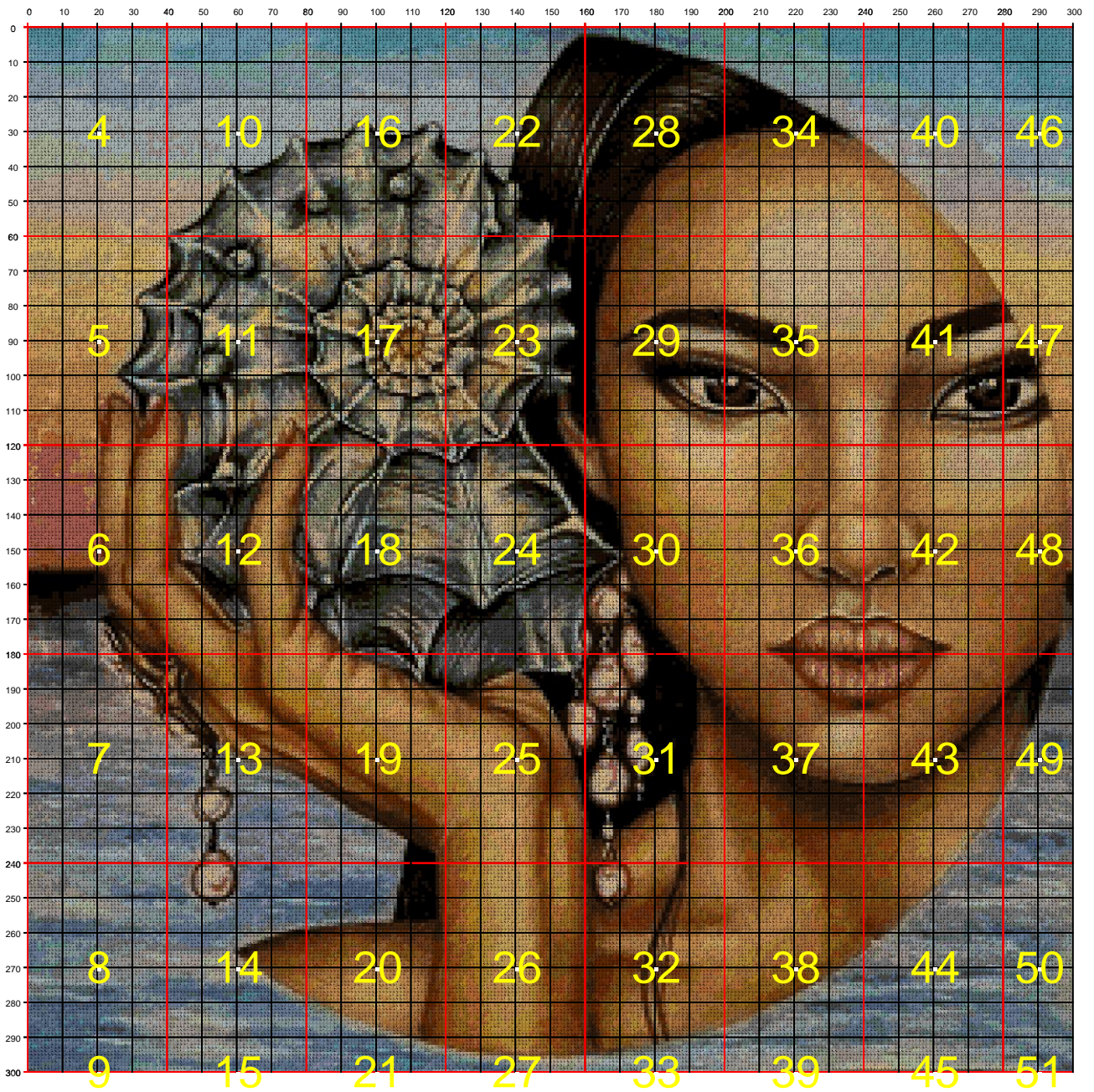




Prohibida su venta. Libre Distribución



Dimensiones del bordado en cms. (Alto x Ancho) / Size of embroidery in cms (Height x Width): 55 x 55

Puntos del Bordado / Stitches: 300 x 300

Número total de puntos / Total number of stitches: 90000

Colores / Colors : 80

Aida 14 (5,5 pts/cm)



La longitud del hilo de cada madeja PANDA es de 10 metros, un 20 % más que otras marcas del mercado.

Puede solicitar el material para este bordado en www.hilosrosace.es o en el teléfono 965 240 207



Prohibida su venta. Libre Distribución

COLOR	NOMBRE DEL COLOR	CÓDIGO PANDA	NÚMERO DE PUNTOS	MADEJAS NECESARIAS
	Blue Gray Medium	B1	561	1
	Yellow Beige V Dk	B8	770	1
	Pewter Light	B0	892	1
	Mahogany Vy Dk	C9	1044	1
	Mahogany Med	C0	936	1
	Black	D4	3904	2
	Pewter Gray	D9	1199	1
	Steel Gray Lt	D0	1336	1
	Terra Cotta Med	F0	638	1
	Mahogany Dark	G7	517	1
	Pewter Gray Dark	G0	1453	1
	Steel Gray Dk	H1	2296	1
	Hazelnut Brown Dk	H3	541	1
	Brown Med	H5	1578	1
	Brown Light	H6	1341	1
	Brown Very Light	H7	441	1
	Tan	H8	2428	2
	Tan Light	H9	884	1
	Shell Gray Med	J3	667	1
	Sky Blue	K7	1038	1
	Fern Green Lt	K0	378	1
	Fern Green Vy Lt	L1	1101	1
	Turquoise	M4	636	1
	Turquoise Light	M5	418	1
	Drab Brown V Lt	N7	694	1
	Beige Gray Vy Dk	N9	1038	1
	Beige Gray Dark	N0	550	1
	Beaver Gray Dk	P3	675	1
	Beaver Gray Med	P4	1124	1
	Beaver Gray Lt	P5	1134	1
	Old Gold Lt	P7	657	1
	Topaz	R4	2121	1
	Old Gold Medium	R5	429	1
	Tan Very Light	R0	860	1
	Topaz Ultra Vy Dk	T0	1536	1
	Topaz Dark	U1	1733	1
	Topaz Medium	U2	488	1
	Coffee Brown Dk	V2	1290	1
	Peacock Blue	V4	758	1
	Golden Olive Lt	X5	882	1
	Golden Olive Vy Lt	X6	1255	1
	Beige Brown Vy Dk	X7	581	1
	Hazelnut Brown V Dk	Y3	1045	1
	Coffee Brown Vy Dk	Y0	1364	1
	Red Copper Dark	5a	694	1
	Copper Med	7a	534	1



Prohibida su venta. Libre Distribución

COLOR	NOMBRE DEL COLOR	CÓDIGO PANDA	NÚMERO DE PUNTOS	MADEJAS NECESARIAS
	Gray Green Med	1b	2210	1
	Gray Green Light	2b	2699	2
	Antique Blue Medium	5b	1161	1
	Antique Blue Light	6b	1888	1
	Avocado Grn Black	7b	1193	1
	Coffee Brown Ult Dk	1c	1700	1
	Golden Brown Dk	5e	1744	1
	Golden Brown Med	6e	3012	2
	Golden Brown Light	7e	3827	2
	Aquamarine Lt	3f	472	1
	Aquamarine Vy Lt	4f	566	1
	Brown Gray Vy Dk	0f	767	1
	Brown Gray Med	1g	407	1
	Mocha Brown Vy Dk	4g	683	1
	Mocha Brown Med	5g	694	1
	Yellow Beige Md	0g	476	1
	Green Gray Md	3h	546	1
	Green Gray	4h	601	1
	Black Brown	2k	3275	2
	Gray Green Dark	5n	865	1
	Mahogany Light	0n	899	1
	Mocha Brown Lt	5p	580	1
	Pewter Gray Vy Dk	8p	1155	1
	Straw Dark	8r	1063	1
	Straw	9r	796	1
	Golden Brown	4s	1833	1
	Golden Brown Pale	5s	576	1
	Lavender Blue Dark	6t	792	1
	Lavender Blue Med	7t	1416	1
	Straw Very Dark	0u	1254	1
	Autumn Gold Med	2v	592	1
	Autumn Gold Lt	3v	852	1
	Cocoa Light	9v	468	1
	Mocha Beige Light	2w	499	1



Prohibida su venta. Libre Distribución

Table with 40 columns and 180 rows, containing alphanumeric data for software distribution. The table is color-coded with red and yellow highlights.



Prohibida su venta. Libre Distribución



Prohibida su venta. Libre Distribución

Table with 40 columns (41-80) and 40 rows (181-240). Each cell contains alphanumeric characters. Rows 181-190 are highlighted in red. Row 200 is also highlighted in red. Row 211 is highlighted in blue. Row 220 is highlighted in red. Row 231 is highlighted in blue. Row 240 is highlighted in red.



Prohibida su venta. Libre Distribución



Prohibida su venta. Libre Distribución



121 122 123 124 125 126 127 128 129 130 | 131 132 133 134 135 136 137 138 139 140 | 141 142 143 144 145 146 147 148 149 150 | 151 152 153 154 155 156 157 158 159 160

Prohibida su venta. Libre Distribución



Prohibida su venta. Libre Distribución

Table with 21 columns (161-200) and 30 rows (121-180) containing alphanumeric codes.



161 162 163 164 165 166 167 168 169 170 | 171 172 173 174 175 176 177 178 179 180 | 181 182 183 184 185 186 187 188 189 190 | 191 192 193 194 195 196 197 198 199 200 |

Prohibida su venta. Libre Distribución



201 202 203 204 205 206 207 208 209 210 | 211 212 213 214 215 216 217 218 219 220 | 221 222 223 224 225 226 227 228 229 230 | 231 232 233 234 235 236 237 238 239 240 |

Prohibida su venta. Libre Distribución



Prohibida su venta. Libre Distribución

Table with 280 columns and 240 rows (181-240), containing alphanumeric codes in a grid format.



241 242 243 244 245 246 247 248 249 250 | 251 252 253 254 255 256 257 258 259 260 | 261 262 263 264 265 266 267 268 269 270 | 271 272 273 274 275 276 277 278 279 280 |

Prohibida su venta. Libre Distribución



Prohibida su venta. Libre Distribución

	281	282	283	284	285	286	287	288	289	290	291	292	293	294	295	296	297	298	299	300
181	C0	T0	T0	5e	5a	H5	H5	V2	V2	4g	1c	D4	D4	2k	2k	D9	D9	D9	D9	D9
182	T0	5e	T0	5e	H5	H5	H5	V2	X7	1c	D4	D4	D4	2k	4g	D9	D9	D9	D9	D9
183	5e	5e	5e	H5	H5	H5	V2	V2	Y0	D4	D4	D4	D4	2k	0f	D9	D9	D9	D9	D9
184	5e	G7	5a	H5	H5	V2	V2	1c	D4	2k	2k	2k	D4	1c	G0	D9	D9	D9	D9	D9
185	5e	G7	H5	H5	H5	Y0	1c	D4	D4	2k	D4	2k	2k	7b	D9	D9	D9	D9	B0	D9
186	5e	H5	V2	H5	V2	4g	2k	D4	D4	D4	2k	2k	2k	0f	P3	D9	D9	D9	D9	D9
187	H6	V2	V2	V2	1c	2k	D4	2k	D4	D4	D4	2k	D4	D9	D9	D9	G0	G0	G0	D9
188	H5	V2	H5	Y0	2k	D4	2k	2k	D4	D4	D4	2k	2k	D9	G0	G0	G0	G0	G0	G0
189	H5	H5	Y0	2k	2k	2k	2k	2k	D4	D4	D4	2k	7b	D9	G0	G0	G0	G0	G0	G0
190	H5	Y0	2k	2k	2k	2k	1c	2k	D4	D4	D4	2k	0f	D9	G0	G0	G0	G0	G0	6t
191	V2	1c	2k	2k	2k	7b	1c	2k	D4	D4	D4	7b	D9	D9	G0	G0	G0	G0	G0	6t
192	1c	2k	1c	1c	7b	4g	1c	D4	2k	D4	2k	4g	H1	G0	G0	G0	G0	G0	G0	6t
193	2k	2k	1c	2k	7b	4g	1c	D4	D4	D4	7b	8p	H1	G0	8p	G0	G0	G0	G0	G0
194	1c	1c	1c	1c	4g	4g	1c	D4	2k	D4	1c	G0	D9	G0	G0	8p	8p	G0	G0	D9
195	1c	1c	1c	4g	4g	4g	7b	D4	2k	D4	4g	D9	D9	D9	D9	D9	D9	D9	6t	B0
196	Y0	Y0	Y0	4g	4g	Y0	7b	D4	2k	D4	0f	P3	D9	D9	H1	H1	B0	B0	B0	B0
197	Y0	4g	Y0	V2	4g	Y0	7b	2k	D4	2k	D9	P3	D9	P3	P3	B0	P3	B0	B0	B0
198	Y0	Y0	Y0	V2	V2	Y0	7b	2k	D4	4g	P3	P3	P3	P3	B0	P3	B0	H1	H1	H1
199	Y0	Y0	V2	V2	V2	Y0	Y0	2k	D4	G0	9v	H1	B0	B0	H1	B0	H1	H1	H1	H1
200	Y0	Y0	V2	V2	V2	Y0	Y0	2k	2k	H1	H1	H1	B0	H1	B0	H1	H1	H1	H1	H1
201	V2	V2	V2	H5	V2	Y0	4g	1c	4g	H1	H1	B0	B0	B0	B0	B0	P3	P3	P3	H1
202	H5	V2	V2	H5	V2	V2	X7	X7	D9	H1	H1	B0	H1	B0	D9	H1	B0	B0	B0	H1
203	H5	H5	H5	H5	V2	Y3	Y3	N9	H1	H1	B0	D9	G0	D9	6t	B0	D9	B0	B0	H1
204	H5	H5	H5	V2	V2	G0	Y3	1g	H1	H1	B0	D9	G0	G0	G0	G0	D9	D9	D9	D9
205	Y3	H5	Y3	H5	H5	Y3	N9	H1	B0	B0	D9	G0	G0	G0	G0	G0	5n	5n	D9	D9
206	H5	Y3	Y3	H5	Y3	N9	P3	B0	H1	B0	5n	5n	6t	6t	6t	6t	6t	6t	D9	D9
207	H5	H6	H5	H5	Y3	N9	9v	B0	H1	D9	6t	5n	6t	6t	6t	6t	6t	6t	6t	B0
208	H6	Y3	H5	Y3	Y3	N9	H1	B0	H1	5n	B0	6t	6t	6t	6t	6t	5n	5n	B0	B0
209	5e	Y3	H5	Y3	G0	P3	H1	H1	H1	H1	B0	H1	B1	B0	D9	B0	D9	P3	P3	B0
210	H6	Y3	H5	H3	Y3	P4	B0	H1	H1	H1	D9	B0	H1	P4	2b	2b	J3	D0	P5	J3
211	H6	Y3	Y3	Y3	N9	P4	H1	B0	B0	H1	P4	H1	D0	2b	2b	2b	2b	2b	R0	2b
212	H6	H6	H3	Y3	9v	H1	H1	H1	H1	H1	B0	B0	P3	B0	P5	P4	5g	B0	H1	J3
213	H6	H3	Y3	9v	5g	H1	H1	H1	P4	H1	H1	H1	P3	H1	H1	H1	H1	H1	P3	D9
214	H6	H3	N9	9v	9v	H1	B0	H1	P4	H1	B0	H1	B0	P4	P4	H1	9v	5g	H1	P3
215	H3	Y3	5g	9v	P3	D9	B0	D9	P3	H1	H1	H1	P3	D9	D9	H1	H1	H1	D9	P4
216	H3	H3	2w	9v	B0	B0	B0	B0	H1	H1	P4	P4	H1	P4	P4	B0	B0	H1	H1	H1
217	H3	N0	P4	H1	B0	P3	H1	P4	P4	H1	P4	H1	H1	H1	H1	P4	J3	H1	H1	H1
218	N9	5g	5g	P5	H1	H1	H1	H1	D0	H1	P4	D0	D0	D0	D0	D0	J3	J3	H1	H1
219	N0	5g	P4	H1	D0	J3	D0	J3	D0	D0	P4	H1	D0	P4	P4	P4	D0	P4	D0	P4
220	5g	9v	H1	H1	D0	D0	2b	2b	2b	J3	2b	J3	D0	D0	P4	D0	P4	P4	H1	H1
221	5g	H1	H1	D0	P4	H1	H1	P3	H1	H1	H1	H1	D0	P4	P4	H1	4h	P5	D0	P4
222	H1	H1	B0	B0	H1	H1	H1	H1	H1	B0	H1	H1	H1	P4	H1	4h	P4	H1	P4	P4
223	P4	H1	B0	B0	B0	B0	H1	H1	H1	H1	H1	H1	B0	P4	H1	H1	H1	H1	H1	P4
224	P4	B0	B0	B0	H1	H1	H1	P4	P4	H1	H1	P4	P4	H1	P4	P4	H1	H1	H1	H1
225	H1	B0	B0	H1	B0	H1	H1	P4	P4	H1	D0	P4	H1	H1	H1	4h	P4	P4	4h	H1
226	H1	H1	H1	B0	B0	H1	H1	B0	P4	P4	P4	D0	P5	P5	D0	P4	P4	H1	H1	H1
227	B0	B0	D9	P3	D9	B0	B0	H1	H1	H1	P4	P4	H1	H1	P4	P5	2b	J3	P5	D0
228	5n	H1	D0	H1	P4	P4	P4	H1	H1	P4	H1	H1	P4	P4	D0	H1	H1	D0	P5	D0
229	H1	B0	D0	2b	2b	J3	D0	H1	B0	B0	B0	B0	B0	H1	H1	B0	H1	H1	H1	H1
230	B0	B1	H1	H1	D0	J3	2b	J3	P5	J3	D0	D0	P4	H1	H1	H1	H1	H1	H1	H1
231	5b	7t	7t	B1	2b	2b	2b	2b	2b	2b	2b	2b	2b	2b	6b	1b	H1	H1	H1	H1
232	6t	G0	G0	G0	G0	5n	D9	D9	D9	D9	D9	5n	D9	D9	G0	D9	5b	5b	7t	B0
233	G0	G0	G0	G0	G0	G0	G0	G0	5n	5n	5n	6t	6t	G0	G0	G0	G0	5n	5n	5n
234	6t	5b	6t	G0	G0	G0	G0	5b	6t	6t	7t	5b	B1	5b	6t	G0	G0	6t	5b	5n
235	7t	7t	5b	7t	5b	5b	6t	6t	6t	6t	5b	6t	5b	5b	5b	G0	G0	G0	5n	5b
236	7t	B1	1b	B1	7t	B1	7t	6t	5b	6t	G0	6t	5b	5b	7t	5b	5n	5b	5b	7t
237	B0	5n	H1	B1	7t	7t	7t	6t	5n	5n	5n	5b	5b	7t	7t	7t	7t	H1	H1	H1
238	H1	H1	H1	7t	7t	7t	7t	7t	5b	7t	1b	1b	7t	H1	7t	B1	H1	H1	H1	H1
239	H1	7t	7t	7t	7t	B1	B1	B1	5n	5n	D9	5n	1b	7t	1b	1b	H1	H1	H1	H1
240	7t	7t	7t	7t	5b	7t	7t	7t	7t	7t	7t	7t	H1	H1	H1	H1	H1	H1	H1	H1



Prohibida su venta. Libre Distribución

	281	282	283	284	285	286	287	288	289	290	291	292	293	294	295	296	297	298	299	300
241	7t	7t	5n	7t	7t	B1	2b	6b	2b	6b	6b	B1	H1	B1	B0	5n	B0	B0	H1	H1
242	5n	7t	5n	5n	6t	6t	B1	B1	6b	6b	2b	6b	D0	2b	2b	P5	D0	1b	1b	1b
243	7t	5n	5n	5n	B0	B0	D9	5n	D9	D9	B0	B0	B0	B0	B0	H1	P4	D0	D0	D0
244	7t	6b	6b	7t	B1	B0	H1	5n	5n	D9	B0	H1	H1	H1	H1	H1	H1	H1	4h	D0
245	B0	H1	B0	1b	2b	P5	J3	2b	D0	D0	D0	D0	D0	D0	P4	H1	4h	P4	D0	D0
246	5n	D9	5n	B0	H1	P4	D0	P5	P5	P5	P5	2b	2b	2b	2b	L1	P5	P4	4h	P4
247	H1	H1	P4	D0	P4	D0	P4	P4	D0	2b	P5	P4	P4	P5	P5	2b	L1	L1	D0	P4
248	P5	P5	J3	D0	P5	P5	D0	D0	P4	P5	J3	2b	2b	L1	B0	4h	J3	L1	P5	P4
249	P5	P5	P5	P5	D0	P4	P4	D0	P5	P5	P5	P4	L1	2b	2b	2b	2b	2b	L1	D0
250	P4	P5	D0	P4	P4	P4	P4	P4	4h	P4	P5	P4	4h	P5	J3	P4	P4	4h	P5	J3
251	D0	D0	P5	P5	P5	D0	P5	P5	P5	P5	D0	D0	2b	P5	P4	P4	P4	4h	P4	P4
252	2b	2b	P5	P5	D0	D0	P4	H1	D0	P4	D0	D0	P5	D0	D0	P4	J3	L1	D0	P4
253	P4	P4	P4	P5	2b	2b	J3	P4	H1	P4	D0	D0	P4	D0	D0	P4	P4	H1	P4	P4
254	B0	H1	B0	B0	H1	H1	P4	H1	H1	H1	H1	D0	H1	H1	P4	P4	H1	H1	H1	P4
255	B0	H1	H1	H1	H1	H1	H1	H1	H1	H1	D0	H1	H1	H1	H1	P4	H1	4h	H1	P4
256	1b	B0	H1	H1	H1	1b	H1	1b	H1	H1	H1	H1	D0	H1	H1	H1	H1	4h	P4	4h
257	B0	H1	H1	1b	1b	1b	1b	D0	D0	1b	H1	B0	B1	1b	1b	H1	1b	P4	D0	P4
258	5n	5n	B0	B0	5n	H1	H1	H1	H1	H1	B1	B1	B1	H1	H1	H1	D0	H1	H1	B0
259	6t	5b	5b	5n	5n	G0	5n	D9	D9	H1	1b	5n	5n	5n	B0	H1	H1	H1	H1	H1
260	G0	G0	G0	6t	6t	6t	6t	7t	7t	7t	7t	5b	B0	7t	B0	5n	B0	H1	D0	
261	6t	6t	5b	5b	7t	7t	7t	6t	D9	5n	5b	5b	7t	7t	H1	H1	B0	H1	1b	1b
262	7t	7t	7t	7t	7t	7t	5b	5n	G0	G0	5n	5b	7t	7t	7t	H1	H1	H1	1b	1b
263	1b	2b	6b	7t	5b	5b	5b	5b	7t	5b	1b	7t	7t	7t	7t	H1	H1	1b	1b	D0
264	D0	2b	6b	1b	5n	D9	5n	5b	5b	5b	7t	5b	5b	5b	7t	H1	H1	1b	1b	D0
265	L1	2b	2b	2b	1b	5n	5b	5b	5b	5b	5b	5n	5n	5n	B0	H1	H1	H1	D0	D0
266	1b	5n	H1	H1	1b	1b	7t	5b	5b	5b	5b	5n	5b	5b	H1	B0	1b	4h	K0	K0
267	H1	B0	1b	1b	7t	7t	5b	5b	7t	5b	5b	5b	7t	B0	H1	1b	4h	K0	D0	K0
268	5n	H1	5n	B0	1b	1b	B1	B1	7t	7t	7t	7t	B0	H1	1b	D0	D0	K0	P4	4h
269	5n	B0	B0	5n	H1	H1	5b	7t	7t	7t	1b	1b	1b	1b	D0	4h	D0	K0	K0	K0
270	7t	B0	B0	5n	5n	5n	5b	5b	5n	5n	5n	H1	H1	1b	D0	D0	D0	D0	D0	K0
271	6b	6b	1b	1b	1b	H1	7t	7t	7t	1b	1b	H1	H1	B0	H1	H1	P4	P5	L1	K0
272	5n	5n	5n	5n	7t	7t	1b	1b	1b	1b	1b	3f	1b	1b	1b	P4	D0	D0	P5	K0
273	H1	5b	5n	5n	5n	7t	7t	1b	7t	7t	7t	H1	H1	H1	H1	H1	H1	P4	P4	P4
274	1b	1b	1b	7t	7t	5b	5b	7t	7t	1b	1b	1b	1b	1b	1b	P4	P4	P4	P5	4h
275	1b	1b	1b	1b	H1	1b	7t	H1	5n	D9	D9	H1	1b	1b	H1	D0	P4	P4	P4	4h
276	D0	1b	1b	H1	1b	H1	H1	1b	1b	1b	6b	1b	H1	1b	1b	4h	4h	4h	P4	4h
277	6b	2b	2b	1b	1b	1b	1b	H1	1b	3f	3f	1b	1b	1b	D0	D0	P4	P4	4h	P4
278	7t	7t	H1	H1	H1	1b	H1	H1	3f	1b	1b	H1	H1	B0	5n	H1	P4	4h	D0	P4
279	5n	5n	5b	7t	1b	7t	H1	3f	3f	1b	1b	1b	6b	H1	H1	4h	P4	4h	P4	P4
280	5b	5b	7t	7t	7t	7t	3f	7t	H1	H1	7t	H1	1b	1b	D0	D0	P4	P4	P4	P4
281	7t	7t	7t	7t	1b	1b	1b	7t	7t	H1	5b	H1	5n	H1	B0	B0	H1	4h	P4	P4
282	7t	7t	7t	7t	7t	7t	7t	7t	1b	7t	5b	B0	3f	1b	H1	B0	H1	4h	K0	
283	7t	7t	5b	5b	5b	5b	5n	5n	5b	7t	5b	5b	7t	H1	1b	1b	1b	D0	D0	D0
284	7t	7t	7t	7t	7t	7t	H1	5b	5n	5n	5n	7t	5b	7t	1b	1b	D0	D0	P4	D0
285	7t	7t	7t	7t	7t	3f	3f	7t	7t	5b	5b	5n	5n	5n	5n	3f	1b	D0	D0	D0
286	5n	5b	5b	7t	5b	5b	5b	5b	5n	7t	5b	5n	5b	5b	5b	5b	H1	H1	1b	D0
287	3f	5b	5b	7t	5b	7t	7t	7t	5b	5n	D9	5b	5n	5n	5n	5n	5b	H1	3f	H1
288	1b	1b	1b	1b	1b	1b	1b	1b	1b	1b	7t	5n	5n	5n	5n	5b	5b	5n	H1	H1
289	5b	7t	H1	7t	1b	1b	1b	B1	6b	1b	1b	7t	5b	5b	5b	5b	5b	7t	7t	
290	5b	7t	7t	5n	H1	7t	7t	1b	7t	1b	1b	6b	1b	1b	1b	7t	1b	7t	5b	3f
291	7t	7t	7t	7t	1b	1b	1b	1b	1b	1b	1b	7t	1b	1b	1b	1b	1b	7t	5n	5n
292	5n	5b	5n	7t	5b	5b	7t	7t	1b	1b	1b	1b	1b	1b	1b	1b	1b	6b	1b	1b
293	1b	1b	1b	H1	3f	3f	H1	H1	7t	7t	7t	1b	7t	1b	1b	1b	1b	1b	1b	1b
294	6b	6b	6b	1b	1b	3f	5b	7t	7t	1b	1b	7t	1b	7t	B1	6b	1b	1b	B1	7t
295	1b	1b	1b	1b	5b	7t	7t	5b	5b	6t	5n	5b	5b	7t	7t	7t	1b	7t	1b	1b
296	5n	D9	D9	D9	D9	6t	6t	6t	G0	G0	G0	6t	5n	5n	D9	5n	5b	7t	1b	6b
297	H1	H1	1b	1b	7t	5b	7t	5b	5n	5n	5n	G0	5n	5n	5b	5b	5b	7t	7t	7t
298	D0	D0	D0	D0	6b	D0	1b	1b	1b	6b	7t	7t	5n	1b	V4	5b	6t	D9	D9	6t
299	L1	L1	L1	L1	L1	L1	2b	2b	P5	6b	1b	1b	5b	5b	5n	6t	5n	G0	G0	G0
300	1g	4h	4h	4h	4h	4h	4h	K0	K0	D0	L1	6b	1b	3f	7t	5b	6t	6t	6t	6t



281 282 283 284 285 286 287 288 289 290|291 292 293 294 295 296 297 298 299 300|

Prohibida su venta. Libre Distribución